



MAD SCI
INNOVATIONS

Custom Designs

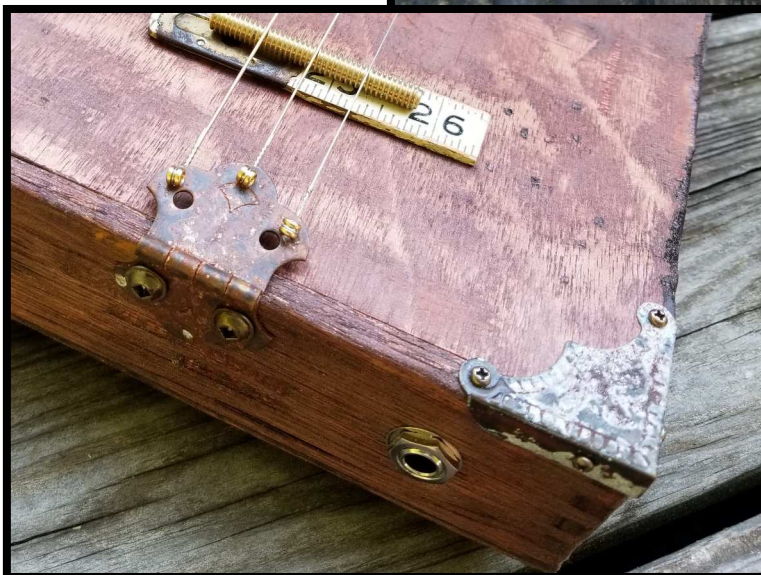




Barn Burner



This antique-style guitar features a distressed Oliva cigar box. The neck is crafted from locally-harvested oak. The 23" scale, 1.5" wide fretboard has been painted black, sanded and etched to the appearance of a charred barrel stave. Numbers are etched at the side fret markers to aid the right handed player. The hinge tail piece and box corners have a heavy patina to add to the antique look. The bridge is made of a vintage rule and brass threaded rod. A linear rod piezo pickup is positioned below the bridge for optimal vibration detection.

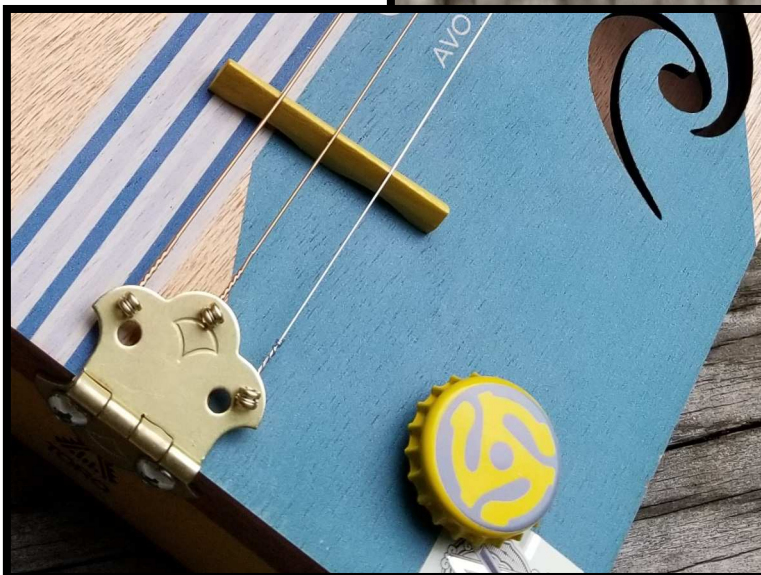




Blue Note



Blue Note is inspired by this colorful Avo Uenzian cigar box. The neck and headstock are crafted from locally-sourced Osage Orange wood that will darken with UV exposure. The 1.5" wide, 23" scale, blue dyed, Tiger Maple fretboard picks up on the theme with Wenge hardwood inlay fret markers. Inlay Wenge side markers aid the right handed player. A linear piezo pickup is positioned below the Osage Orange bridge for optimal vibration detection. A custom bottle cap knob controls the volume. The tail piece is crafted from a decorative brass hinge.

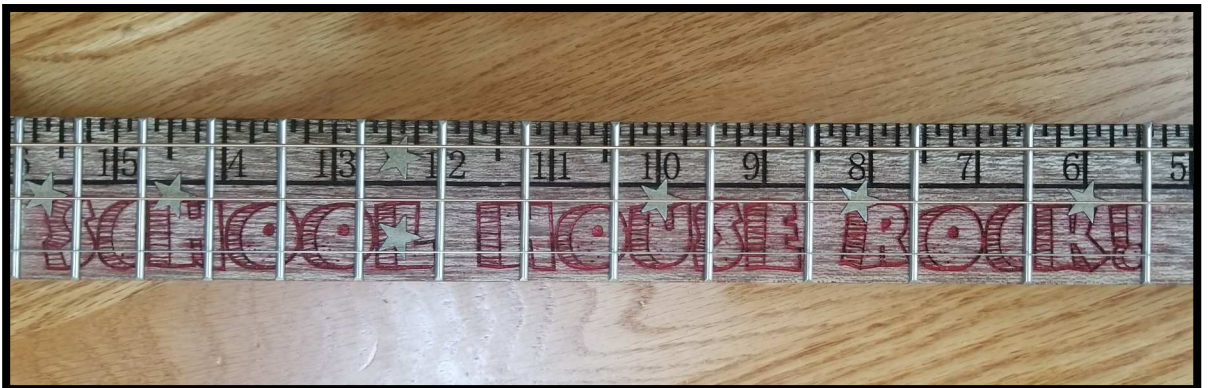




School House Rocks



School House Rock features a steel Crayola Box body with a handcrafted wood bridge featuring a handmade brass "crayon." The tail piece is a custom-designed, 3D-printed pencil sharpener. It looks like the real thing, but isn't--no sharp edges here! The headstock features the Swingline stapler logo and tuning pegs in the primary colors. The fret board is made from Red Balau wood and features a true-to-scale ruler, with a nostalgic typeface evoking the School House Rock television show and gold star inlays. While this guitar can be played acoustically, a piezo pickup has been installed for plugging into an amp.





TORO 6 1/2 x 50 | 10 (6488)

EXPEDICIÓN
TAA EXCLUSIVE

Day Hiker



Day Hiker is a 20" scale guitar designed for travel. Measuring just 26" long, the neck and headstock are one piece and are crafted from locally sourced Cherry. The 1.5" wide, Tiger Maple fretboard features Wenge wood inlay fret markers. Metal fasteners on the side of the fretboard aid the right handed player. The cigar box lid is secured closed with a bike chain link. An antler tip serves as the bridge.

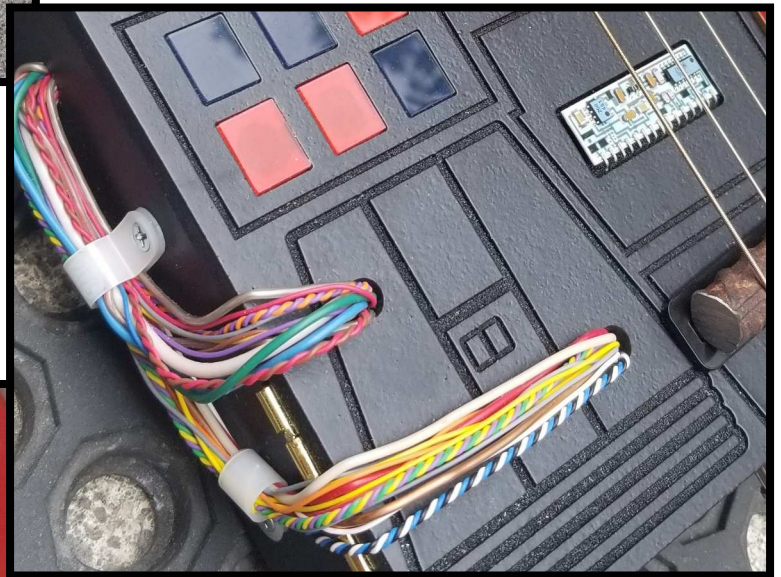




Empire



Empire is a Star Wars inspired cigar box guitar with lots of artistic sci-fi details. The neck and headstock are crafted from Walnut and Tiger Maple. The 1.5" wide, 25" scale, Ash fretboard features Red Balau hardwood inlay number fret markers. Note the use of a mix of nickel and brass fret wire. Gold-colored fasteners provide side markers to aid the right handed player. A custom circuit-style acrylic pick guard protects the satin black painted finish. A linear piezo pickup is positioned below the rebar bridge for optimal vibration detection, while sprocket chain segments secure the strings at the tail. Han Solo dice knobs control tone and volume.





Goldtop



Goldtop is my interpretation of what Les Paul would have imagined if his famed Goldtop by Gibson would have been a cigar box guitar. It features all the same electronics as the original Goldtop--P90 pickups with orange drop capacitors and Bourne's potentiometers. There are tone and volume controls for each pickup with a select that allows the player to choose between the two. The Monte cigar box is paired with a walnut neck with a Gibson-inspired CBG logo on the headstock and is mated to a Wenge fret board with maple inlays.





Gurkha Pirate



Inspired by this rare Gurkha cigar box that looks like a treasure chest, Gurkha Pirate features a wenge fretboard with Maple inlays featuring the classic skull and crossbones as well as a sword at the 12th fret. A vintage-looking brass key mounted to a hand-distressed piece of reclaimed wood forms the bridge. The custom wood volume knob is designed to look like the top of a bottle cork. The custom Jolly Roger pickup cover is made from walnut and covers the flat humbucker, while the headstock has been hand-carved to embed an irregular-shaped "gold" doubloon.





Henderson Blues

Henderson Blues is named after Huntsville-based musician Jimmy Henderson, who often plays a steel National resonator. It features a black headstock mated to a Walnut neck with Maple inlaid fret markers and a flat humbucker pickup.





Jamaican Pride



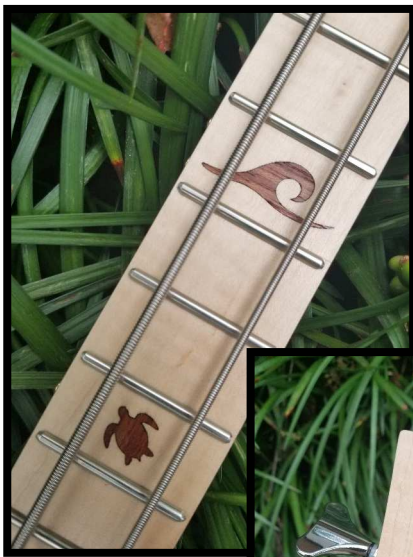
Visiting Jamaica and seeing how folks up-cycle metal discards into instruments was the inspiration for this piece. Jamaican Pride is a Bob Marley Reggae themed baritone three-string guitar featuring a naturally-aged metal can body with a Bob Marley silhouette overlaid on the Ethiopian flag on the front, along with the Jamaican flag on the back. The 28" scale fretboard is made from Red Balau wood with a maple "leaf" inlay. It features the words Jamaican Rum, while the headstock is adorned with the Rastafarian lion. While this guitar sounds great acoustic, a piezo pickup and an equalizer have been installed for electric play.





Low Tide

This two-string cigar box bass will have you ready for your island jam session as it prominently features a rare Island Jim cigar box. A fixed steel truss rod stiffens the 1.5" wide walnut neck. The Maple, Walnut and Cherry headstock features chrome machine head tuners. The 30" scale Tiger Maple fretboard has Red Balau wood inlay fret markers, while the side has metal fasteners to aid the right handed player. The strings are secure at the tail end with custom Ash and Red Balau laminated "Flip Flops." A flat, humbucker-style, magnetic pickup sits under a custom Red Balau cover and is blended with a linear piezo pickup, that is positioned under the Zebra Wood surfboard bridge, using a custom Red Balau and Cherry 'Tiki' knob. The other knob controls the volume.





Mighty Dobro

This green and gold Brick House cigar box guitar uses a paint can lid as a resonator, giving it a rich banjo-like, dobro sound. It was built to a 25" scale and features a 1.5" wide walnut neck and an Ash fretboard with hardwood Walnut inlay fret markers. The headstock is a traditional Banjo style with a maple inlay and chrome and pearl machine heads for a classic look.. A disk piezo pickup is attached to the resonator for optimal vibration detection. The bridge is crafted from exotic Zebrawood and the tail piece is from a stainless steel vegetable steamer.





Rickenboxer



If you are familiar with classic Rickenbacker guitars, you'll pick up the many design elements that inspired this cigar box creation. The Poppy Van Winkle's cigar box gains some wear protection from a white acrylic pick guard and brushed nickel drawer handle bridge cover. The tail piece is cut from durable Delrin and the magnetic pickup lies beneath a custom, brushed aluminum cover. A linear piezo pickup is positioned beneath the Zebrawood bridge for optimal vibration detection. Electronics include blending, tone and volume controls. The 1.5" wide, walnut fretboard features Maple triangle inlay fret markers, while Ebony inlay dots face the right-handed player along the side. The neck and headstock are crafted from Cherry and Maple woods. The base of the neck, down to the tail piece, is reinforced with Red Balau. Yep, that's 6 different hard and exotic woods used in construction and ornamentation!



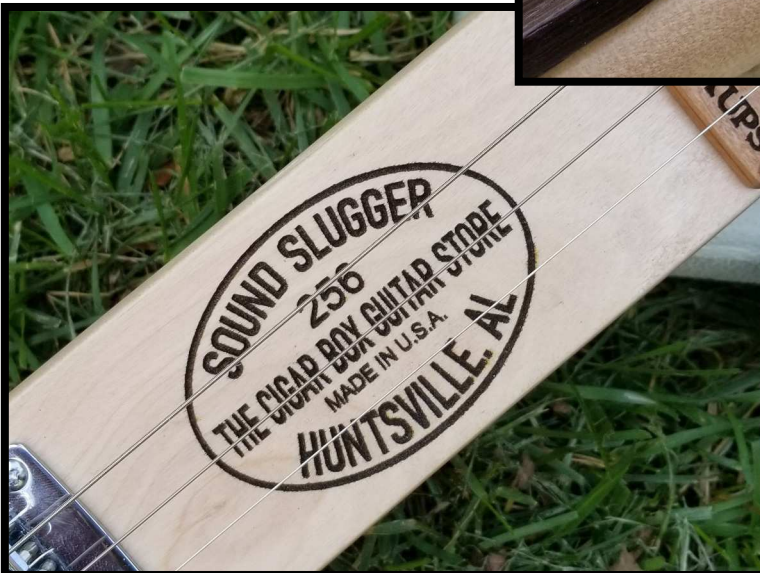
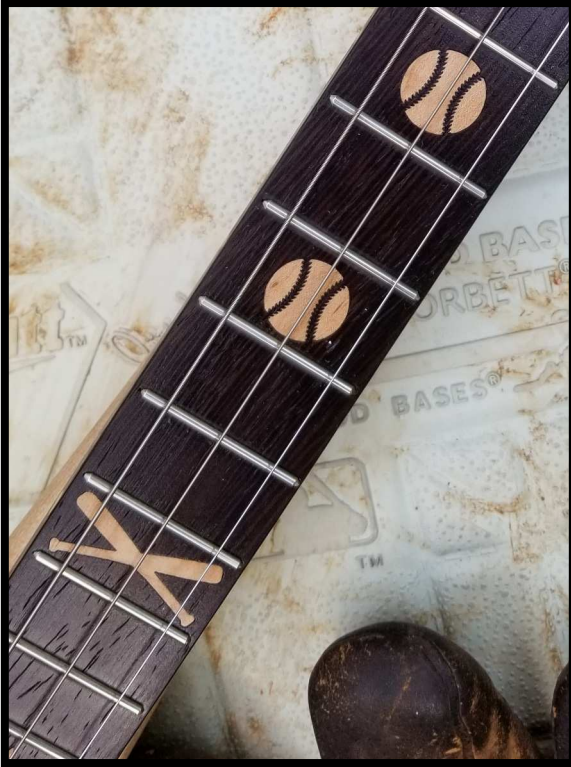


Big League
PICKUPS

SOUND SLUGGED
256
THE DEAD BOY GUITAR SHOP
THE GUITAR SHOP OUTRINT STUDIO
MADE IN U.S.A.
HUNTSVILLE, AL

Sound Slugger

This is an authentic Louisville Slugger baseball bat. It features a Wenge wood fret board with Maple inlays and a magnetic pickup with a custom designed cover. The oval logo is inspired by the Louisville Slugger logo and features Huntsville, Alabama area code prominently in honor of The Cigar Box Guitar Store. Both the oval logo and the pickup cover can be customized to honor a favorite team or a special occasion.

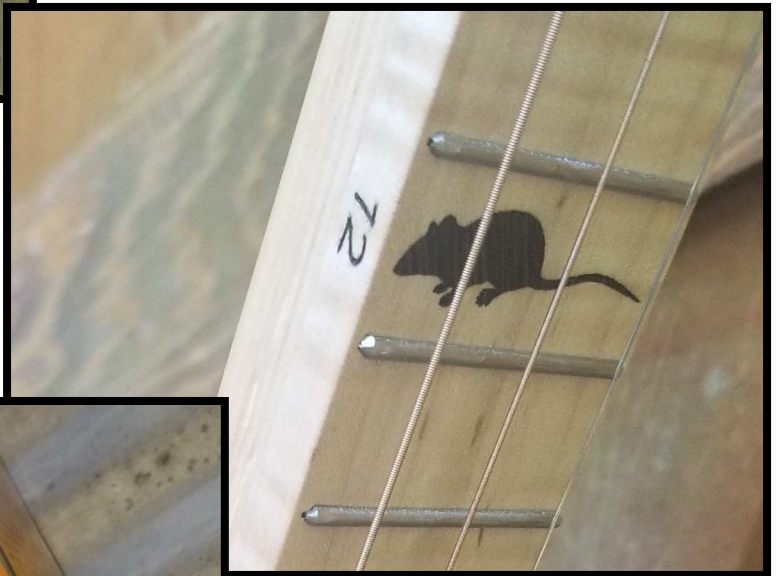




Paralich's
PYRETHRO
FLY KILLER
GENERAL INSECTICIDE
KILLS
FLIES, MOSQUITOES, GNATS,
FLEAS, MOTHS, LICE, TICKS,
ANTS, WASPS, BEES, BUGS,
AND OTHER PESTS.
USE IN HOUSES, GARAGES,
SHEDS, AND OUTDOOR AREAS.
EFFECTIVE IN 10 MINUTES.
THE W. L. GILBERT COMPANY

The Exterminator

The Exterminator was inspired by the 1930s vintage, ½ gallon Rawleigh's Pyrethro Fly Killer can which makes up the body of this guitar. The neck is crafted from Red Oak and Walnut and features an exotic Wenge wood fly and mouse inlay fret fretboard. The 1.5" wide Tiger Maple fretboard also features engraved fret numbers on the side to aid the right-handed player. A Victor rat trap adorns the top of the can, while a mouse trap is used for the bridge. A linear piezo pickup is positioned below the bridge for optimal vibration detection. A game dice, with skulls for number dots, controls the volume. The machine-head turners feature black and red skulls. The tail piece is made from a stainless steel vegetable steamer .





The Deuce



The Deuce was my #32 build, completed in December 2019. The 1963 vintage California license plate, carburetor sound hole, flying eyeball fret dots, dice knobs and pinstripe-style artwork bring together my love of hot rods and rock and roll. The Ibanez inspired headstock is crafted from Red Balau wood and fitted with chrome-sealed machine heads. A Tiger Maple fretboard is adorned with Von Dutch-inspired, Red Balau wood, flying eyeball, inlay fret markers. The guitar body is handcrafted from Poplar with a removable MDF back plate. All edges have been rounded for comfort. It features a custom-designed and fabricated carburetor sound hole, a hardtail bridge and a piezo pickup. Paint and applied graphics are sealed with 3 layers of clearcoat for abrasion protection.



About The Artist

My "mad scientist" tendencies emerged early, when I blew up a model spaceship light bulb in an AC socket, sparking my interest in innovation and art. An engineering career that has lasted two decades (and counting) has continued to feed my thirst for innovation, while hobbies of woodworking, instrument building, electronics and home brewing allow me to express my creativity. I am proud to have my art displayed in your home and hope that your music-making brings joy to you and others. ~ Jeff Mello

